

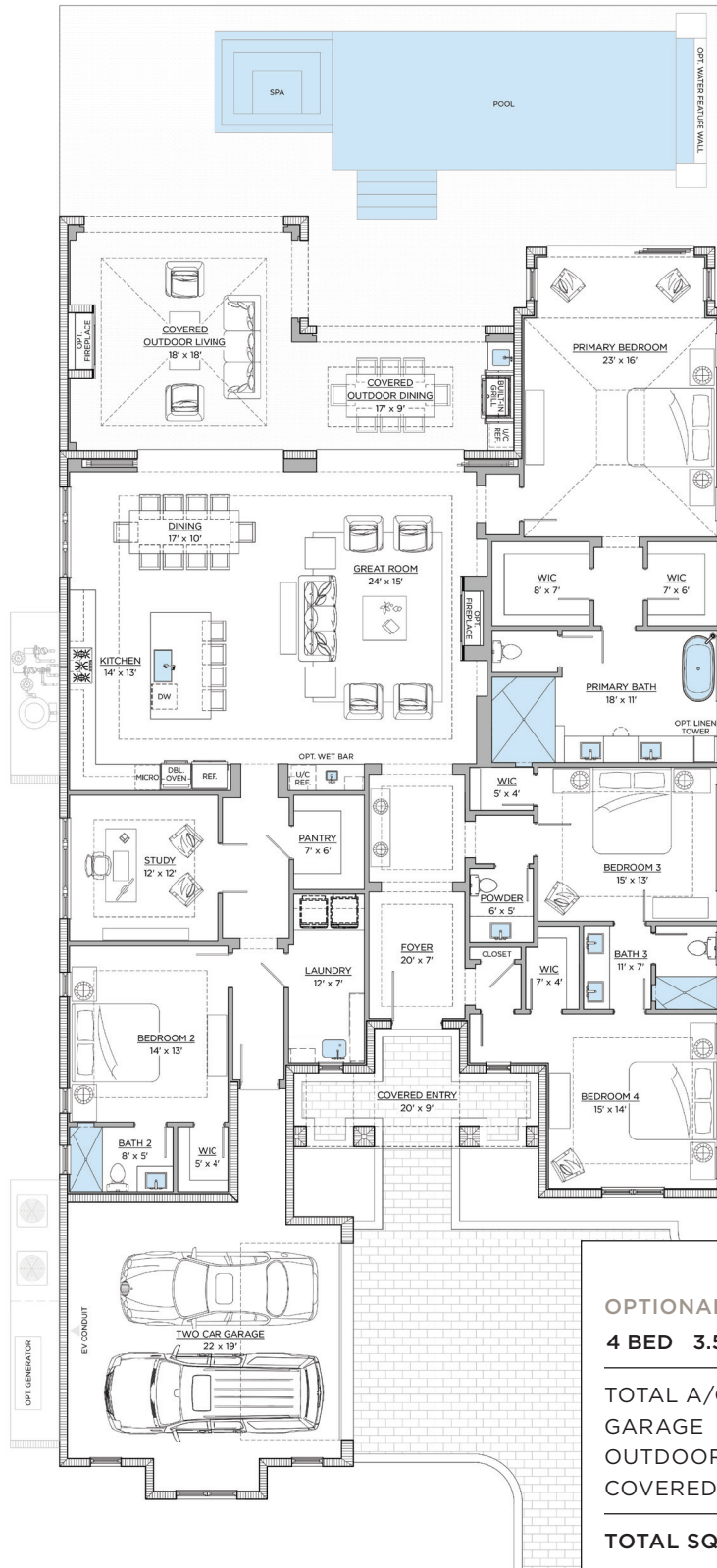
HIBISCUS IV
STANDARD



HIBISCUS IV STANDARD	
4 BED 3.5 BATH STUDY 2 CAR GARAGE	
TOTAL A/C	3,289 SQ.FT.
GARAGE	594 SQ.FT.
COVERED LANAI	416 SQ.FT.
COVERED ENTRY	145 SQ.FT.
TOTAL SQUARE FEET	4,444 SQ.FT.

ORAL REPRESENTATIONS CANNOT BE RELIED UPON AS CORRECTLY STATING REPRESENTATIONS OF THE DEVELOPER AND BUILDER. FOR CORRECT REPRESENTATIONS, REFER TO THE CONTRACT AND DOCUMENTS REFERENCED THEREIN. Air-conditioned square footage on all residential floor plans is compiled by using the architectural method: From the outside finished surface of the exterior walls to the opposite outside finished surface of the exterior walls and includes the floor area on which the exterior walls are located, hallways, interior wall space and closets. All approximate dimensions of each room are in most cases measured from the inside finished surface of a given wall to the inside finished surface of the opposite wall within each room and are taken from the greatest points of each given room. Actual square footages and dimensions may vary as a result of, among other things, field conditions and changes during construction. All floor plans of the Home are not to scale and may be the reverse (mirror) image of those shown. The dimensions, sizes, features, configurations and other information contained on this drawing are subject to change without notice and are meant to be illustrative only. All depictions of furniture, soffits, floor coverings and other matters of detail, including items of finish and decoration, are conceptual only and are not included with the Home unless expressly specified in the Standard Features exhibit to the Purchase Contract, as amended. All residences are sold unfurnished. Copyright © 2025. GBH Oyster Harbor Dev., LLC. All Rights Reserved. Fiddler's Creek Realty, Inc. REALTORS®. 02.19.2025

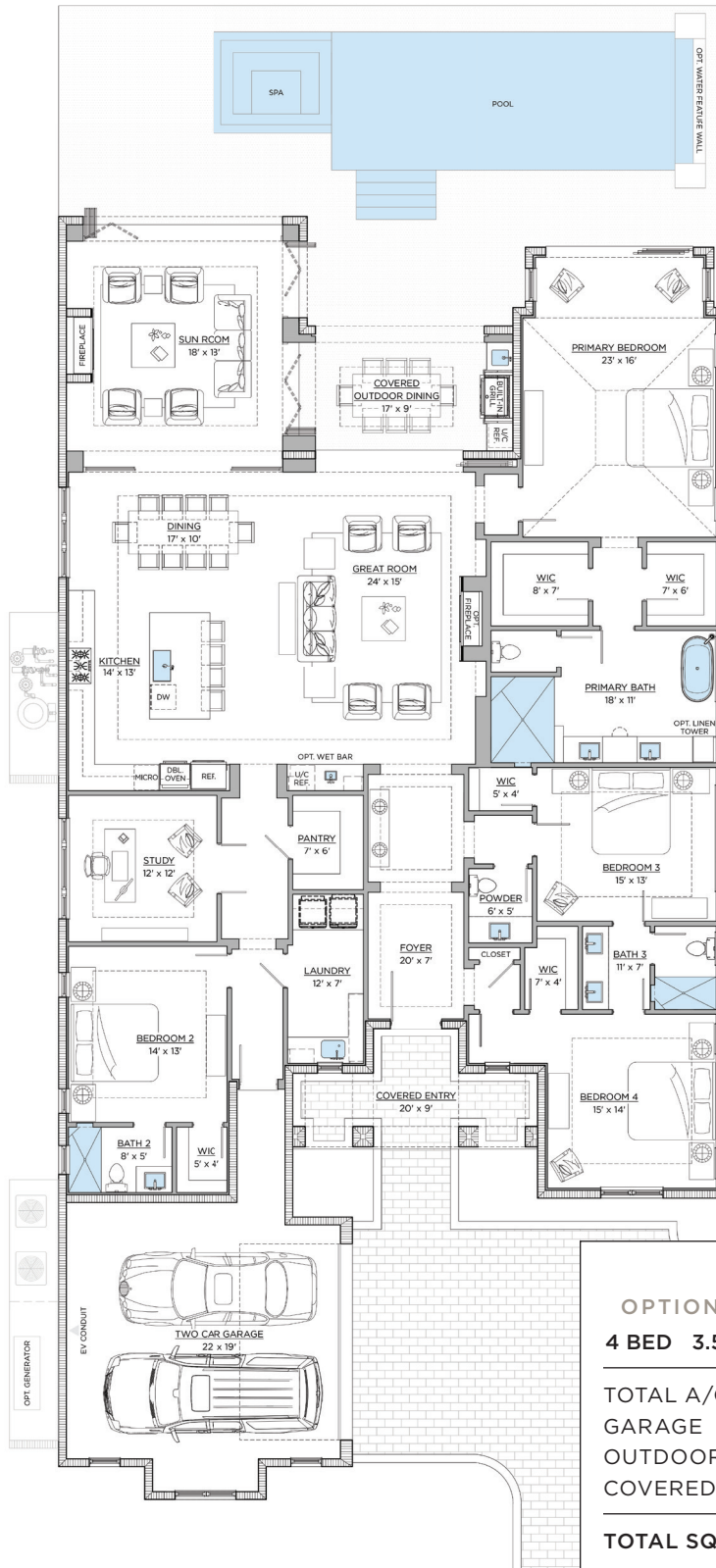
HIBISCUS IV
OPTIONAL UPGRADE - OUTDOOR LIVING



HIBISCUS IV	
OPTIONAL UPGRADE - OUTDOOR LIVING	
4 BED 3.5 BATH STUDY 2 CAR GARAGE	
TOTAL A/C	3,289 SQ.FT.
GARAGE	594 SQ.FT.
OUTDOOR LIVING & DINING	600 SQ.FT.
COVERED ENTRY	145 SQ.FT.
TOTAL SQUARE FEET	4,628 SQ.FT.

ORAL REPRESENTATIONS CANNOT BE RELIED UPON AS CORRECTLY STATING REPRESENTATIONS OF THE DEVELOPER AND BUILDER. FOR CORRECT REPRESENTATIONS, REFER TO THE CONTRACT AND DOCUMENTS REFERENCED THEREIN. Air-conditioned square footage on all residential floor plans is compiled by using the architectural method: From the outside finished surface of the exterior walls to the opposite outside finished surface of the exterior walls and includes the floor area on which the exterior walls are located, hallways, interior wall space and closets. All approximate dimensions of each room are in most cases measured from the inside finished surface of a given wall to the inside finished surface of the opposite wall within each room and are taken from the greatest points of each given room. Actual square footages and dimensions may vary as a result of, among other things, field conditions and changes during construction. All floor plans of the Home are not to scale and may be the reverse (mirror) image of those shown. The dimensions, sizes, features, configurations and other information contained on this drawing are subject to change without notice and are meant to be illustrative only. All depictions of furniture, soffits, floor coverings and other matters of detail, including items of finish and decoration, are conceptual only and are not included with the Home unless expressly specified in the Standard Features exhibit to the Purchase Contract, as amended. All residences are sold unfurnished. Copyright © 2025. GBH Oyster Harbor Dev., LLC. All Rights Reserved. Fiddler's Creek Realty, Inc. REALTORS®. 02.19.2025

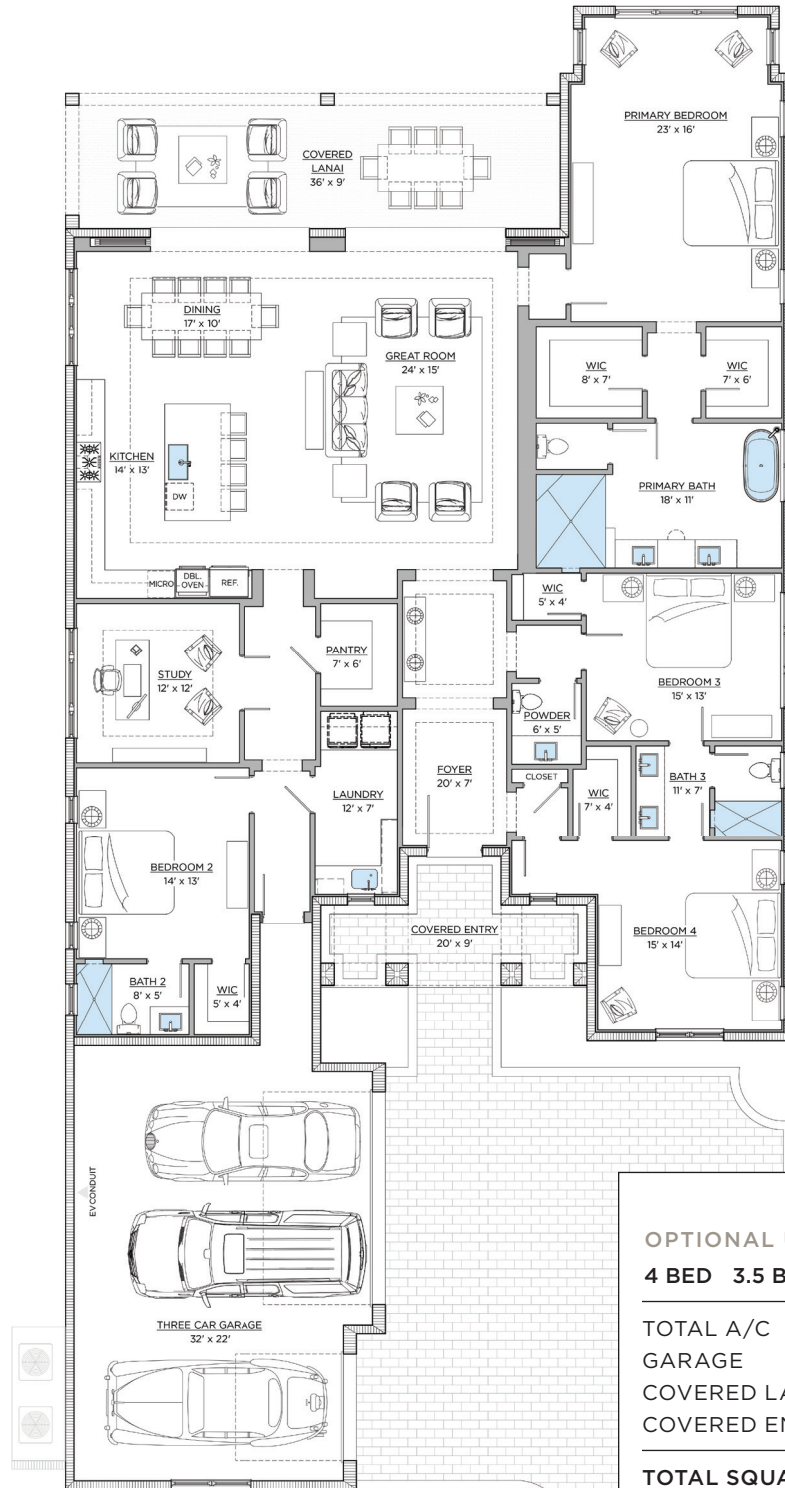
HIBISCUS IV
OPTIONAL UPGRADE - SUN ROOM



HIBISCUS IV OPTIONAL UPGRADE - SUN ROOM 4 BED 3.5 BATH STUDY 2 CAR GARAGE	
TOTAL A/C	3,689 SQ.FT.
GARAGE	594 SQ.FT.
OUTDOOR DINING	200 SQ.FT.
COVERED ENTRY	145 SQ.FT.
TOTAL SQUARE FEET	4,628 SQ.FT.

ORAL REPRESENTATIONS CANNOT BE RELIED UPON AS CORRECTLY STATING REPRESENTATIONS OF THE DEVELOPER AND BUILDER. FOR CORRECT REPRESENTATIONS, REFER TO THE CONTRACT AND DOCUMENTS REFERENCED THEREIN. Air-conditioned square footage on all residential floor plans is compiled by using the architectural method: From the outside finished surface of the exterior walls to the opposite outside finished surface of the exterior walls and includes the floor area on which the exterior walls are located, hallways, interior wall space and closets. All approximate dimensions of each room are in most cases measured from the inside finished surface of a given wall to the inside finished surface of the opposite wall within each room and are taken from the greatest points of each given room. Actual square footages and dimensions may vary as a result of, among other things, field conditions and changes during construction. All floor plans of the Home are not to scale and may be the reverse (mirror) image of those shown. The dimensions, sizes, features, configurations and other information contained on this drawing are subject to change without notice and are meant to be illustrative only. All depictions of furniture, soffits, floor coverings and other matters of detail, including items of finish and decoration, are conceptual only and are not included with the Home unless expressly specified in the Standard Features exhibit to the Purchase Contract, as amended. All residences are sold unfurnished. Copyright © 2025. GBH Oyster Harbor Dev., LLC. All Rights Reserved. Fiddler's Creek Realty, Inc. REALTORS®. 02.19.2025

HIBISCUS IV
OPTIONAL UPGRADE - 3 CAR GARAGE



HIBISCUS IV	
OPTIONAL UPGRADE - 3 CAR GARAGE	
4 BED 3.5 BATH STUDY 3 CAR GARAGE	
TOTAL A/C	3,289 SQ.FT.
GARAGE	823 SQ.FT.
COVERED LANAI	416 SQ.FT.
COVERED ENTRY	145 SQ.FT.
TOTAL SQUARE FEET	4,673 SQ.FT.

ORAL REPRESENTATIONS CANNOT BE RELIED UPON AS CORRECTLY STATING REPRESENTATIONS OF THE DEVELOPER AND BUILDER. FOR CORRECT REPRESENTATIONS, REFER TO THE CONTRACT AND DOCUMENTS REFERENCED THEREIN. Air-conditioned square footage on all residential floor plans is compiled by using the architectural method: From the outside finished surface of the exterior walls to the opposite outside finished surface of the exterior walls and includes the floor area on which the exterior walls are located, hallways, interior wall space and closets. All approximate dimensions of each room are in most cases measured from the inside finished surface of a given wall to the inside finished surface of the opposite wall within each room and are taken from the greatest points of each given room. Actual square footages and dimensions may vary as a result of, among other things, field conditions and changes during construction. All floor plans of the Home are not to scale and may be the reverse (mirror) image of those shown. The dimensions, sizes, features, configurations and other information contained on this drawing are subject to change without notice and are meant to be illustrative only. All depictions of furniture, soffits, floor coverings and other matters of detail, including items of finish and decoration, are conceptual only and are not included with the Home unless expressly specified in the Standard Features exhibit to the Purchase Contract, as amended. All residences are sold unfurnished. Copyright © 2025. GBH Oyster Harbor Dev., LLC. All Rights Reserved. Fiddler's Creek Realty, Inc. REALTORS®. 02.19.2025